

Looking after someone

Information and support for carers in **Wales**



Tell us how you found this guide: www.surveymonkey.co.uk/r/ZN7JCYS



Contents

ABOUT THIS GUIDE	3
A CARER'S GUIDE	4
GETTING HELP AND SUPPORT	10
Where to start	11
Carer's needs assessment	13
Assessment for the person you care for	14
Coming out of hospital	15
Managing someone's affairs	16
Taking a break	17
Looking after yourself	18
Equipment and technology	22
YOUR FINANCES	26
Getting information on benefits	27
Carer's Allowance	28
Carer's Credit	29
Disability benefits for the person you are looking after	30
Help with Council Tax	31
Other financial help	32
YOUR WORK	34
Working carers	35
Your rights in work	36
Getting support	38
DIRECTORY	42

About this guide

As many as 311,000 carers in Wales were providing unpaid care for a relative, neighbour or friend in a typical week in 2021.¹



At times, caring can bring many positives and rewards. There's nothing more natural and human than helping our loved ones get the most out of life.

There's also nothing more difficult than focusing on someone else's needs without neglecting our own. Whether we're caring around the clock or balancing caring with work and family life, it can be exhausting.

The 'system' can be bewildering. The emotions can be shattering.

This guide is designed to outline your rights as a carer and the support available to you.

We have produced separate versions of this guide for carers living in England, Scotland and Northern Ireland because there are some differences in legislation, health and social care.

However caring affects you, we're here.



This icon means there is a Carers Wales factsheet available to download for free from our website: carersuk.org/wales/factsheets

1 gov.wales/health-disability-and-provision-unpaid-care-wales-census-2021-html#113508

A carer's guide

Looking after someone can be tough. Here are 10 of the key challenges that caring can throw your way...

1. Getting the right advice and information... quickly!

Caring can be extremely complicated, whether we're grappling with the benefits system or considering how to pay for care. Each strand is confusing but when all the strands are tangled, it can feel bewildering. Turning to an expert can help to unravel the most complex situation.



"I contacted the Carers UK Helpline and you gave me vital information that empowered me to challenge and win my case."

2. Coping with feelings of guilt

When we're looking after someone, it's important to accept that guilt is normal and that we only feel it because we care. Being able to talk to people who understand what we're going through and how we feel can help us handle our feelings of guilt better.

"After the diagnosis, I was consumed with the thought that I could have done more. Why didn't I recognise the signs? I now accept that what has happened isn't anyone's fault.

So now I don't say I feel guilty, I say I feel sad – an easier emotion to cope with."



3. Being assertive with professionals

Looking after someone will often involve dealing with several different professionals. When we feel a professional has not explained things clearly, does not see the whole picture or perhaps is not doing what they should do, it can be hard to speak up. However, that is exactly what we need to do. And this starts with valuing ourselves and our caring role.



"The doctors discussed his condition with me and we agreed that we should implement a care plan to give Dad a dignified and pain-free death. They asked if I wanted to talk to Dad about it, and I did."

4. Handling difficult conversations

Even a tricky conversation with professionals can be a breeze compared to having to deal with family and friends. We may have to ask a sibling to be more supportive, remind a friend that we still exist or talk gently to a parent who doesn't accept that they can't live independently any longer. This takes courage, bags of patience and tact. Talking it through with people outside the situation can make a world of difference.

“We put off talking about mental capacity with my grandmother. Having these difficult conversations early is far preferable to leaving it too late and having other people make decisions about the future.”



6

5. Looking after our own health and wellbeing

As carers, we may have immediate needs such as taking breaks, getting sleep, eating properly or exercising. We may have longer-term needs such as building fulfilling relationships, pursuing hobbies or developing careers.

Caring always involves an element of putting our own needs aside. However it's important that we look after ourselves too, so we can keep going as carers, and because we are individuals whose needs are just as valid as those of our loved ones.




“I never took a break – I look back now and wish I had been stronger to let others help care for Mum.”

6. Noticing when we're too stressed

Stress can alert us to potential dangers and spur us on to achieve a goal.

However, sometimes the balance tips too far and the pressure becomes so intense or persistent that we feel unable to cope. As soon as we notice it getting too much, it's helpful to talk about how we feel rather than hoping the stress will go away.




"Sometimes stress and tiredness take their toll. One night we had a fight about nothing..."

"...at the time I didn't know what to do or where I could go for help. That's how it feels when we're under stress."

7. Making difficult decisions

There will be points when we are faced with a particularly emotional or difficult decision.

Sometimes it's a decision we have planned for, or at least held at the back of our minds. Sometimes it's completely unexpected and leaves us feeling out of control. Where we can, thinking about decisions in advance can help us keep a cool head when it comes to the crunch.



"It's better to be prepared and to do some research about different options, even if you're not sure what route you'll go down. I couldn't have selected the right care home whilst Mum was in hospital, in the middle of that stressful time."

8. Keeping relationships fulfilling



Caring for our loved ones can express the best of who we are, and can take a relationship to a profound new level. It can also push us to the brink through financial, emotional and practical strain. Illness can cast aside the best-laid plans and make relationships feel utterly different. What matters most is that there's a way for us to talk honestly and find help when we need it.

"I was suddenly juggling hospital visits, a full-time job and trying not to scream. I remember feeling I had lost all control over my life: that stroke had happened not just to Peter, but to both of us."

8

9. Adapting to changing circumstances

Whether we're looking after someone who's recovering or whose condition is deteriorating over time, caring inevitably involves adapting to circumstances.

Sometimes it's easy to focus on the practical details – the administration of care workers or move to the care home. Being able to stay attentive to our relationship with the person we're caring for in the midst of all that change is far from easy.



"There were times when it seemed that Dad was at death's door. But a couple of days later he was sitting up in bed, bright as a button. That really made the emotions difficult, constantly living on the edge."

10. Keeping a sense of humour

Nothing relieves stress and tension better than a good laugh.

Sometimes caring can feel a bit like starring in our own sitcom, and there's no shortage of comedy material. Other times we may need a bit of help finding something to laugh about.

Either way, sharing experiences with other carers is often great not just for feeling listened to and understood but for finding the humour that can keep us going.

“Dementia is no laughing matter, but humour is my way of coping.

I treat most of Dad's outbursts as comedy gold for the book or the sitcom I'll never get round to writing!”



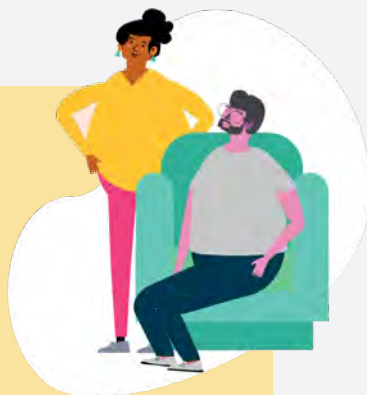
9

Join Carers Wales for support, understanding and lasting change

However caring affects you and your family, we're here for you. By joining Carers Wales, which is part of Carers UK, you can be part of a supportive community and a movement for change.

It's free to join us. Just visit carersuk.org/wales/join-us or call 029 2081 1370.

 @carerswales  /carerswales  /carerswales  @carerswales



Getting help and support



Where to start

Caring can be hard work – physically and emotionally. It's important to find out about the different ways you can get help and support with caring.

One way to get help and support is through an assessment by the local authority social services department. Both you and the person you care for can get assessments. This may result in help and support being provided to you as a carer and/or to the person you are looking after. For further information see pages 13–14.

You could decide to buy in additional help and support for the person you are looking after. One option would be to employ an individual or use a care provider such as a care agency.

If you are looking for care providers you could:

- ask the local authority if they have a list of approved care providers
- search on the Care Inspectorate Wales website: careinspectorate.wales
- search on the Housing Care services directory: housingcare.org/service

You can also find out about equipment and technology that could help. Even minor aids and adjustments could make the home safer and help someone you care for to feel more independent – see pages 22–23.

Caring inevitably means adapting to changing circumstances, so it's important to think about the future. You may need to look into different ways of managing someone's affairs, either now or for the future – see page 16.

You could find out if you have a local carers' organisation, and if so what support they offer to carers in the area.

To find your local carers' organisation visit dewis.wales/home

Upfront is a free online tool that can help you get straight to the information you need.

Visit carersuk.org/wales/upfront to give it a go!

Upfront

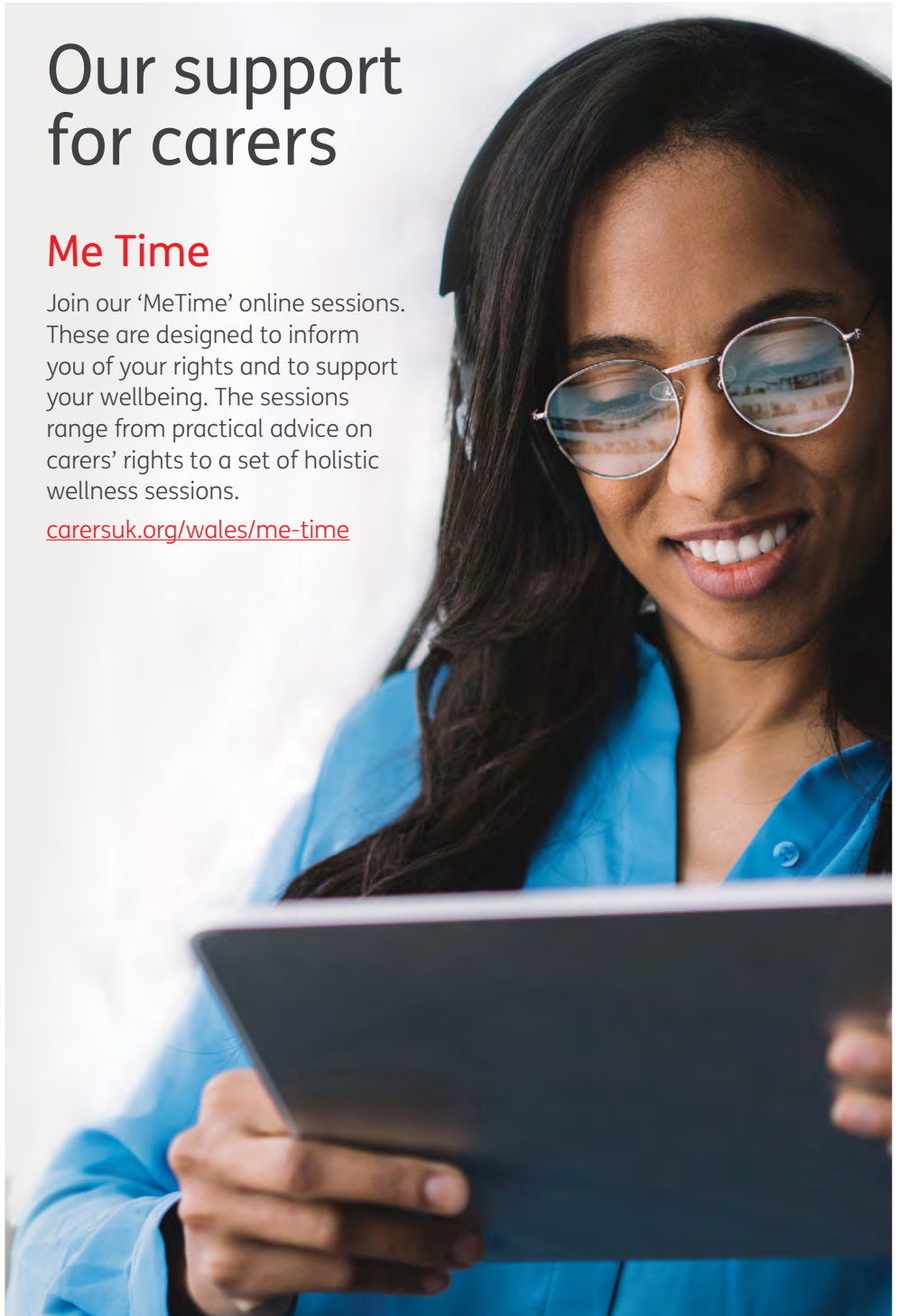


Our support for carers

Me Time

Join our 'MeTime' online sessions. These are designed to inform you of your rights and to support your wellbeing. The sessions range from practical advice on carers' rights to a set of holistic wellness sessions.

carersuk.org/wales/me-time



Carer's needs assessment

If you are a carer and have a need for support now or in the future, you should be offered a carer's needs assessment by your local authority.

If you have not been offered a carer's needs assessment, you could contact your local authority and ask for one. You can have an assessment no matter what your level of need, the amount of care you provide or your financial means. Your carer's needs assessment must cover:

- your caring role and how it affects your life and wellbeing
- your feelings and choices about caring
- your health
- work, study, training, leisure
- relationships, social activities and your goals
- housing
- planning for emergencies (such as carer emergency card schemes).

Following the assessment, the local authority will decide if you are eligible for support. This can be provided either to you, or for the person you are looking after to reduce the impact of caring on you.

Support could be provided by the local authority, or in the form of a direct payment.

Some examples of the kind of support you could get include respite, driving lessons, taxi fares, a laptop or a gym membership.

Whether the local authority will pay for any support will depend on your financial situation or the financial situation of the person you are looking after (if services are provided to them).

However not all local authorities will charge for carer support – the rules can vary from one local authority to another.

Even if you are not considered to be eligible for support, the local authority must provide you with information and advice on local services to prevent your needs from developing further.



Read more at carersuk.org/wales/help-and-advice/practical-support/carers-needs-assessment

Assessment for the person you care for

If the person you are looking after is an adult and appears to have a need for support, they should be offered a needs assessment by their local authority.

The person you are looking after can have an assessment no matter what their level of need or their financial means. If they are not offered a needs assessment, they (or you) could contact their local authority and ask for one.

The assessment will look at their physical, mental and emotional needs. You can also be involved in the assessment as their carer (with their consent). You may also have a joint assessment, needs assessment and carer's assessment.

Following the assessment, the local authority will decide whether the person you are looking after is eligible for support. Support could be provided by the local authority, or in the form of a direct payment.

Some examples of the kind of support the person you are looking after could get include: changes to their home to make it more suitable, a care worker, a place at a day centre or a temporary stay in residential care.

Each local authority is likely to differ in terms of what support they can provide. You can find out more about getting help to make adaptations to a home here: gov.wales/adapt-your-home-if-you-are-disabled-or-older-person/enable-support-living-independently-scheme

Even if the person you are looking after is not considered to be eligible for support, the local authority must still provide information and advice.



Find out more at carersuk.org/wales/help-and-advice/practical-support/needs-assessment

Note: If you are looking after a child who is under 18 or are a 'young' carer yourself, under the Social Services and Wellbeing Act (Wales) 2014, you are entitled to a Carer's Needs Assessment.

For more detailed guidance, see the Wales factsheet at: carersuk.org/wales/help-and-advice/practical-support/carers-needs-assessment

Coming out of hospital

Deciding to care, or continue caring, for someone who is coming out of hospital can be very difficult.


Planning for a patient's discharge starts as soon as the patient is admitted to hospital, so it is important to let the hospital staff know as early as possible if you are a carer or thinking about taking on this role.

Before the person you are looking after comes home from hospital, a discharge assessment should be carried out to see whether they need any support once they are discharged.

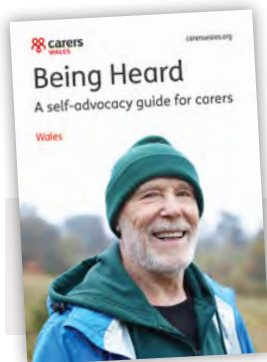
It is important to remember that it is your choice whether or not to take on or continue a caring role.

This discharge assessment should look at whether the person you are looking after is eligible for: any intermediate or reablement care, NHS continuing healthcare or NHS-funded nursing care, other NHS services and/or community care services from the local authority.

If it is not offered, you can ask for a carer's needs assessment to see whether you as a carer need support once the person you are looking after is discharged.

 If you are not offered a carer's assessment, you should contact your local authority and ask for one.

Find out more at carersuk.org/wales/hospital



Our self-advocacy guide also offers tips on communicating effectively with professionals. See carersuk.org/wales/self-advocacy-guide

MyBackUp

Our contingency planning tool could help you prepare for the unexpected. Go to: carersdigital.org/mybackup

Managing someone's affairs

You may want to help manage the affairs of the person you are looking after, or you may want to know how to plan for doing this in the future.

There are different ways of managing someone's affairs. Much depends on whether the person you are looking after can currently make decisions for themselves (which is called having mental capacity) or whether they are unable to make decisions for themselves (which is called lacking mental capacity).

If the person you are looking after has mental capacity but wants some help with managing their bank or building society account, they could make a **third party mandate**. This gives a specific person, such as you as their carer, authority to manage their account.

If the person you are looking after can make decisions for themselves at the moment but wants to appoint a specific person, such as you as their carer, to make certain decisions on their behalf, should the need arise in the future, they could make a **lasting power of attorney** while they are still able to do so. The person you are looking after can only make a lasting power of attorney while they have the

ability to make their own decisions. Here are two types:

Power of attorney for property and financial affairs – bank accounts, paying bills, collecting benefits/pensions and selling a home for example. It can be used before the person is unable to make their own decisions, if they so wish.

Power of attorney for health and welfare. It can only be used when the person is unable to make their own decisions.

If a power of attorney isn't possible or in place

If the person you look after is unable to make their own decisions and just needs help to manage their benefits, you could apply to be their appointee.

If it's too late to arrange a POA, you can apply to become their court appointed deputy. Read more at [gov.uk/become-deputy](https://www.gov.uk/become-deputy)

Find out more at [carersuk.org/wales/managing-someones-affairs](https://www.carersuk.org/wales/managing-someones-affairs)

In our recent campaign, we are encouraging all carers to consider making a power of attorney for themselves too. See [powerofattorneyday.org.uk](https://www.powerofattorneyday.org.uk)

Taking a break

Caring for someone can be a full-time job so breaks are vital for your own wellbeing and quality of life.

There are often so many tasks to juggle when looking after someone, it's easy to get run down and burn out. Having some kind of break every so often will help you to keep going.

It's important to take time out even if it's just a day here and there. Think about the kind of break that you need and what kind of alternative care arrangements the person you are looking after needs.

There are different options for getting alternative care (often called respite care) for the person you are looking after while you take a break. These include:

- getting help from the local authority social services department via assessments (see pages 13–14)
- arranging care yourself (see page 11)
- support from friends or family
- some organisations provide break services for carers or for the person being looked after (or both).

If you want to go on holiday, either alone or with the person you are looking after, there may be some help you could get towards the cost.

In Wales, there is a Short Breaks Scheme funded by Welsh Government that may be able to help you take a flexible short break. Find out more at: shortbreaksscheme.wales



For more options and information on taking a break: carersuk.org/break-factsheet

“It took years before I was able to consider respite for my daughter. Years on, I now know I need that complete break each year. I come back recharged and more able to cope.”

“Catch up on sleep and give yourself time to think. There is no right way to use your time, just be gentle on yourself.”



Looking after yourself

It can feel as though there is very little time for you to take a breather when caring. However, finding moments to relax and de-stress could make a huge difference to your wellbeing.

Here are some suggestions to help you look after yourself and develop your resilience.

Expand your support network

Keeping in touch with family, friends or neighbours about your circumstances may help open up more doors for support when needed. You could join other carers at one of our online meetups (page 12).

Need more sleep?

It may be particularly hard to get the sleep and rest you need, especially if you are helping to look after someone during the night. If you have trouble switching off, there are specially tailored apps that can help, or you may wish to speak to your GP if you're really struggling.

The NHS website has some helpful suggestions: [nhs.uk/live-well/sleep-and-tiredness/how-to-get-to-sleep/](https://www.nhs.uk/live-well/sleep-and-tiredness/how-to-get-to-sleep/)

You can also see our tips at: [carersuk.org/wales/getting-enough-sleep](https://www.carersuk.org/wales/getting-enough-sleep)

Don't neglect your health

Eating well and staying active regularly are great ways to stay healthy, but it can be challenging to eat well and exercise with a busy caring role. Take a look at our Carers Active Hub for ideas and inspiration: [carersuk.org/wales/carers-active-hub](https://www.carersuk.org/wales/carers-active-hub)

Speak to your GP if you are concerned that your caring responsibilities are having an impact on your health so that they can offer you further advice.

Keep up your own interests

As well as doing a physical activity you enjoy, pursue any interest you can to maintain your sense of identity and keep your spirits up, even if it's for only 10–15 minutes. Don't feel guilty and try to arrange extra support to help you do this if you need to – see pages 13–14 and page 17.

Mike's story

Mike cared for his father for over five years. Since discovering Carers UK, he has become a voice for other carers, especially those in marginalised communities.

“ In 2012, I discovered Carers UK after being a carer for my father for more than five years. It was during this time that I was looking for organisations I could volunteer for to use my experience.

I am forever grateful to Carers UK for involving me. Being a voice for carers since then, I have never looked back because there are so many unidentified carers out there who are desperately seeking guidance and practical help.

The thought of many unfound carers, who are missing out on support simply because they don't consider themselves as carers, fills me up with the dedication, passion and drive to reach out, especially to those belonging to BAME and other marginalised and silent groups, such as the very young or elderly carers, as well as working 'sandwich' carers.



I have been involved as a user representative and a voice of carers with CCG, NHS Trusts, local authorities, GP practices, CQC, GM Cancer, GM Mental Health and other platforms and events. ”

Interested in volunteering?

You can find out more about all our volunteering opportunities on our website: carersuk.org/get-involved/volunteer-with-us

Contact volunteer@carerswales.org for more details.

Jaycee's story

Jaycee cared for her mother who had reduced mobility due to a spinal condition for eight years. She left a 25-year nursing career to care for her mother full-time.



20

“ It was a privilege to support my mother to be as independent as possible and enjoy a comfortable quality of life. As well as managing her ongoing healthcare needs, providing emotional support and dealing with day-to-day household responsibilities, I loved assisting her with her favourite activities: cooking, gardening and going on community outings. Even through

the tough times, our connection and respect for each other grew. My biggest struggle was dealing with my emotions. When I first became a carer, I experienced a huge emotional upheaval that came with the sudden change of circumstances. My way of coping was to suppress my feelings and pretend that everything was okay, when it wasn't.



I felt shame around admitting I was struggling, experiencing feelings of guilt, frustration, and resentment. But more than anything, I felt alone in my caring responsibilities and invisible to the outside world. Over time, I found wonderful outlets for expressing my emotions through dancing, writing poetry and sharing how I was feeling with other carers.

Being able to access support through organisations such as Carers UK has been a lifeline. I have also made new friends, gained new skills and established new support



networks. This helped me feel more empowered not only in my caring role, but also as an individual in my own right and for that I am extremely grateful.

As a carer, I received no training on managing difficult emotions and coping with the ongoing pressure and responsibility of caring for loved ones.

But through connecting with a positive network of support with other carers, I gained strength in knowing that I am not alone.



See carersuk.org/break-factsheet for more information.
Or watch our film series: carersuk.org/breaks-videos

Equipment and technology

Different types of equipment, adaptations and technology could help make the home safer, your life easier and provide independence for the person you are looking after.

Equipment could be purchased privately or you might be able to get help with the cost through the NHS or through assessments from the local authority, if they decide that such equipment is necessary.

For **small-scale adaptations** to the home, in Wales, there is a 'Rapid Response Adaptations Programme'. This can help those with disability needs or who are elderly to live more independently. The scheme is delivered by Care and Repair Cymru www.careandrepair.org.uk/en

You must be referred by your local authority or a health professional.


Assistive technology can help people live independently in their own homes and give you peace of mind.

Safety and monitoring devices, such as sensors, can be positioned throughout the home. They can detect if there is a problem, such as a gas leak or fire, and the person you look after needs assistance. Movement alarms can detect motion such as falls or doors opening, and wearable technology can help locate a person if they have wandered away from home.

Mobility aids, such as wheelchairs, stairlifts or mobility scooters, can help people gain more independence, improve their accessibility, and help them feel safer.

There are also ways of using technology to monitor a person's health remotely through equipment they have in their home. Conditions such as asthma, heart failure, diabetes, chronic obstructive pulmonary disease (COPD), stroke and hypertension can be monitored.

Everyday technology, such as the internet or your mobile phone, can take the stress out of a whole host of tasks such as shopping and coordinating care for the person you look after and can help them manage their own condition.

 Find out more at carersuk.org/wales/technology-and-equipment



Smart meters send gas and electricity readings automatically to the energy supplier. This could help give greater independence to the person you care for and could help save time and money if you are helping them manage their energy.

Smart meters come with an in-home display so you can see how much energy is being used and how much it's costing. With a smart meter you get a bill based on how much energy you used – not an estimate. This can take some of the guesswork out of balancing budgets.

Smartphone features and apps have a lot to offer. You can use your phone to scan a document if needed so that you have a back-up version to refer to on your phone for appointments, for example, or you can use the reader mode feature to research key information without interference from adverts. The medical ID setting is also worth exploring.

Connected devices – examples include smart bulbs or blinds that can be controlled remotely. This means that if the person you look after lives at a distance, you can control things like their lighting on their behalf or use smart heating controls to ensure their heating is on or off when appropriate. Voice-controlled devices (such as Siri or Alexa) can also be useful for disabled or older people.

Financial support

While technology and equipment can make your life easier, costs can also add up. You may be able to get financial support to help you pay for some types of technology and equipment. For more information on financial support that may be available to you, you can contact our Helpline team by emailing advice@carersuk.org at any time.

Please note where you are from as guidance will vary by nation.

Support during tough times

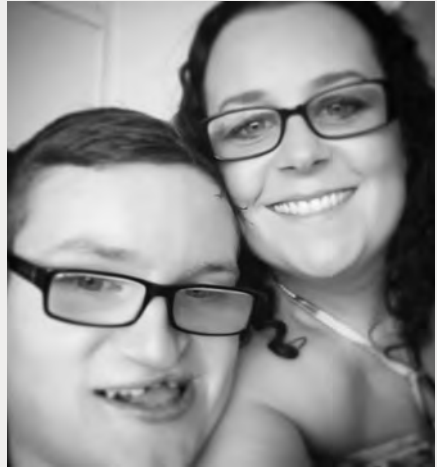
The **Priority Services Register** is for anyone who is in a vulnerable situation and in need of extra support even if this is just needed on a temporary basis. All energy suppliers provide this additional support for customers who need it. It enables you to be prioritised for services, for example, if your energy supply is cut off due to an unforeseen incident.

Read more: the-psr.co.uk

Sarah's story

Sarah is a parent carer to her adult son, who has cerebral palsy and multiple and profound learning disabilities.

Although he now lives in his own supported-living apartment just five minutes away, Sarah remains deeply involved in every aspect of his care.



24

A team of seven to eight staff support him day to day, and Sarah manages this team alongside handling his financial and household affairs. All this fits around her part-time role as an administrator and co-trainer in the health and social care sector.

Discovering Carers UK's Jointly

When Sarah first came across the care coordination app Jointly, she wasn't sure what to expect – and she certainly didn't imagine it would help her coordinate care across her son's entire support team.

Once she began using Jointly, the change was immediate. She described feeling more organised and far better equipped

to stay on top of tasks, rotas, and communication. Instead of managing updates across different platforms – including a costly service they had previously been paying for – everything was now in one place, and accessible to everyone who needed to see it.

Feeling more reassured

One thing Sarah emphasised was the reassurance Jointly gave her. She told us how valuable it is to have communication recorded clearly and to be able to check in on updates from wherever she is. Being able to see what's happening in her son's home in real time means she can pick up concerns earlier and respond more effectively.

Looking after someone?

jointly
by carersUK

Our **Jointly** app can make your life easier



“Looking after someone can be complicated.

Jointly helps me stay on top of things and share information easily with everyone involved in sharing the care.”

Jointly makes caring feel less stressful and more organised.

Jointly is a mobile and online app designed to keep people connected as they share care. It includes:

- group messaging
- task management
- shared calendar
- profile and contacts pages
- notes
- medication manager
- uploaded documents
- contingency planning.

Caring is easier when you do it **Jointly**.



jointlyapp.com



Your finances



Getting information on benefits

There are various benefits that can offer extra support with caring.

It is a good idea to get a benefits check to make sure you and the person you are looking after are claiming all the benefits you are entitled to. In addition, it is a good idea to get benefits advice if you or the person you are looking after have a change of circumstances. The change might affect your benefits, so it's important to make sure you make the right decision for your situation.

Although benefits can be complicated, they can increase your household income and can sometimes help protect your State Pension entitlement in the future.

The Carers UK website describes the main conditions for each benefit and we have produced factsheets which provide more detailed explanations. Find out more at carersuk.org/wales/financial-support

The Carers UK Helpline can also help with questions that you have about benefits. Email advice@carersuk.org for more complex enquiries or call **0808 808 7777** for more general signposting.

Please mention which nation you are based in so that we can tailor our guidance.

Check here for opening hours: carersuk.org/wales/help-and-advice/get-in-touch-with-us

You can get a personalised benefits check online. It will take about 20 minutes to complete. Visit carersuk.org/wales/benefits-calculator

These online benefits check tools are not suitable for everyone. Special rules apply to some groups of people, for example: students, people under 18, people in permanent residential care, UK nationals who live abroad and people who are not British or Irish citizens.

Every year, over £1 billion in benefits go unclaimed in Wales. Welsh Government and Advicelink Cymru have launched a national communications campaign – ‘Claim What’s Yours’ to help people claim what they are entitled to.

The Claim What’s Yours campaign aims to raise awareness of the amount of benefits not claimed in Wales and to encourage people to get in touch using the free Advicelink Cymru helpline.

Free Advicelink Cymru helpline: **0800 702 2020**

Click here to visit the Advicelink Cymru website: advicelinkcymru.org.uk/advice

Carer's Allowance

If you're looking after a family member or friend, you may be entitled to Carer's Allowance.

Carer's Allowance is worth £86.45 a week in 2026–27. You may be eligible if:

- You look after someone who gets a qualifying disability benefit – this includes the middle or the higher rate of the care component of Disability Living Allowance (DLA), either rate of the daily living component of Personal Independence Payment (PIP), either rate of Attendance Allowance, Constant Attendance Allowance (at a certain level) and Armed Forces Independence Payment (AFIP). Certain Scotland benefits also apply – see: gov.uk/carers-allowance/eligibility
- You look after that person for at least 35 hours a week.
- You are aged 16 or over.
- You are not in full-time education.
- You don't earn over £204 a week (after deductions). Check gov.uk/carers-allowance/eligibility from April 2027 as this may change then.
- You satisfy UK presence and residence conditions.

If you are getting certain other benefits, including a State Pension,

then you might not be able to be paid Carer's Allowance at the same time.

However, it might still be useful to make a claim and receive what is called the 'underlying entitlement' to Carer's Allowance, even though you won't be paid the benefit itself. This is because this 'underlying entitlement' to Carer's Allowance can help to increase any means-tested benefits you might be getting (such as Pension Credit, Housing Benefit and Council Tax Reduction), or it could mean that you become entitled to means-tested benefits for the first time.

Claiming Carer's Allowance can sometimes have an impact on other benefits you receive, but this shouldn't put you off thinking about making a claim, as it can often increase your household income overall.

Claiming Carer's Allowance never reduces the amount of Disability Living Allowance (DLA), Personal Independence Payment (PIP), Attendance Allowance or State Pension that the person you are looking after gets. However it can sometimes affect any means-tested benefits they get. Find out more at carersuk.org/wales/carers-allowance

When claiming, if your circumstances change, you must always notify the Carer's Allowance Unit: gov.uk/carers-allowance-report-change

Carer's Credit

Carer's Credit is a way of protecting your State Pension rights. It applies if you are looking after someone, but are not paying National Insurance contributions through paid work and are unable to claim Carer's Allowance.

You do not get paid any money if you claim Carer's Credit. However you get a National Insurance contribution credit to help protect your record (which helps to protect your entitlement to a State Pension).

If you already get Carer's Allowance then you do not need to claim Carer's Credit as your record is already protected.

To claim Carer's Credit you need to be looking after someone for a total of 20 hours or more a week. Normally, the person you are looking after must be getting one of the following:

- the middle or the higher rate of the care component of Disability Living Allowance (DLA)
- either rate of the daily living component of Personal Independence Payment (PIP)
- either rate of Attendance Allowance
- Constant Attendance Allowance
- Armed Forces Independence Payment (AFIP).

However, if the person you are looking after doesn't get one of these benefits, you may still be able to claim Carer's Credit. When you apply, fill in the Care Certificate part of the application form and ask a health or social care professional to sign it.

Carer's Credit can also help with breaks in your caring role. You can claim Carer's Credit for any week within 12 weeks before the date you become entitled to Carer's Allowance or following the week you stop being entitled to Carer's Allowance. This is without meeting the 20-hour condition. This means you could have a break in caring for up to 12 weeks without losing your National Insurance contribution credit.



Find out more at [carersuk.org/wales/carers-credit](https://www.carersuk.org/wales/carers-credit)


Disability benefits for the person you are looking after

The person you are looking after may be entitled to disability benefits to help pay for the extra costs of long-term illness or disability.

Disability benefits are not dependent on how much money the person you are looking after has, and they are not based on their National Insurance record. However, there are conditions they would have to meet in order to receive one of these.

Disability Living Allowance (DLA)

If you are looking after a child under 16 then you could claim DLA for them. DLA has a care component which may be awarded if the child needs help with personal care (such as dressing, washing or using the toilet) or supervision to make sure they are safe, because of their illness or disability. The help the child needs must be substantially more than the help needed by a child of the same age without the illness or disability. DLA also has a mobility component which may be awarded if the child needs help getting around.

 Find out more at carersuk.org/wales/dla


Personal Independence Payment (PIP)

If you are looking after someone aged between 16 and State Pension age, then they could claim PIP. PIP has a daily living component which may be awarded if they need help with daily living activities, such as dressing, washing or using the toilet. PIP also has a mobility component which may be awarded if they need help getting around. If you are aged between 16 and State Pension age, and have such needs yourself, you could also apply.

 Find out more at carersuk.org/wales/pip

Attendance Allowance

If you are looking after someone of State Pension age, they could claim Attendance Allowance. Attendance Allowance may be awarded if they need help with personal care (such as dressing, washing or using the toilet), or supervision to make sure they are safe. If you are of State Pension age and feel you have such needs, you may also be eligible.

 Find out more at carersuk.org/wales/attendance-allowance

Help with Council Tax

If you're caring for someone, you may be able to get help with your Council Tax bill.

Council Tax Reduction (sometimes called Council Tax Support) is a scheme run by the Welsh Government and delivered by local authorities to help those on a low income with their Council Tax bill.

There are also a number of circumstances in which **properties can be exempt from Council Tax**. These are the ones that may be particularly relevant to you as a carer:

- If you have left the property empty and it is no longer your main residence because you are providing personal care to someone
- If the only person(s) living in the property is severely mentally impaired and receives certain benefits, and no one else could be liable to pay the Council Tax
- If the property has been left empty by someone who is now resident in a hospital, a care home or a hostel where personal care is provided.

There are sometimes **discounts you can get on the Council Tax bill**. For example, if only one person lives in the property, a 25% discount can be applied to the bill.


Some people are not counted when it comes to working out how many people live in a property. If everyone is disregarded, a 50% discount will be applied to the bill. Or if only one person counts as living at the property, a 25% discount would apply.

Those who are not counted include certain carers or people with a severe mental impairment. See this page for more details:

citizensadvice.org.uk/wales/housing/council-tax/check-if-you-can-pay-less-council-tax

You may also be able to pay less Council Tax under the **disability reduction scheme** if your home has had work carried out on it to help you or someone else living with a disability.

In order to apply for help with Council Tax, you will need to contact the local council directly. You can look up the details of your local council here: gov.uk/find-local-council

 Find out more at carersuk.org/counciltax

You can also visit gov.wales/council-tax-discounts-and-reduction/carers

Other financial help

There are other ways you may be able to reduce your household expenses – from getting help with energy and health costs, to applying for certain loans or grants.

Help with energy costs

There are a number of ways you can get help with energy costs:

You could contact your supplier to see if they have any discounted tariffs you are eligible for. You may also want to shop around to see if you can find a better deal from another supplier, by using a price comparison website.

If you have reached the qualifying age, and are claiming Pension Credit or certain other benefits, you may be entitled to a Winter Fuel Payment to help pay winter bills – this can be from £100 to £300 depending on your circumstances. If your income is above £35,000, the payment will be taxed back, but you can opt out to avoid this.

If you're receiving certain benefits or Support for Mortgage Interest, you may also be able to get a Cold Weather Payment. You can claim £25 for each week between 1 November and 31 March in which the average temperature in your local area is at or below freezing over seven consecutive days.

You could get a Warm Home Discount on your electricity bill if you meet certain conditions – this can be around £150.

Find out more at carersuk.org/wales/energy-costs

Support with living costs

From managing essential costs to budgeting, you can find some tips and guidance to help with living costs at carersuk.org/wales/living-costs

Budgeting Loan

If you are claiming certain benefits, you may be able to get a Budgeting Loan to help pay for essential things like rent, furniture, clothes or hire purchase debts.

The smallest amount you can borrow is £100. Budgeting Loans are interest free so you only pay back what you borrow. You normally have to repay the loan within 104 weeks.

Find out more at carersuk.org/wales/help-and-advice/financial-support/help-with-bills-and-household-costs

Help with NHS health costs

You may qualify for help with NHS health costs if you are claiming certain benefits. This includes:

- free prescriptions
- free dental treatment
- free NHS eye tests and vouchers to help pay for glasses/contact lenses
- reimbursement of fares to hospital for treatment for you or your child
- reimbursement of the fares of a companion who needs to travel with you for medical reasons.

You may be able to get free prescriptions and NHS eye tests if one or more of these apply:

- you're under 16
- you're 16-18 and in full-time education
- you're 60 or over
- you receive certain benefits
- you have a certain health condition like diabetes
- you have a medical exemption certificate.

If you're on a low income, you might also be eligible for help through the NHS Low Income Scheme.

Prepayment certificates for prescriptions can also reduce costs if you regularly pay for medication.

Find out more at [carersuk.org/wales/health-and-care-costs](https://www.carersuk.org/wales/health-and-care-costs)

Discretionary Assistance Fund

In Wales there is a single national welfare assistance scheme called the Discretionary Assistance Fund which includes Individual Assistance Payments and Emergency Assistance Payments.

Find out more at: [gov.wales/discretionary-assistance-fund-daf](https://www.gov.wales/discretionary-assistance-fund-daf)

Help from your local authority

Your local authority may have a welfare assistance scheme and a crisis and resilience fund to help those who cannot afford to buy household goods like fridges, freezers, beds etc. You should get in touch with your local authority to see what help they can offer.

Grants

There are sometimes grants that you may be able to apply for. Our online guidance is a useful starting point: [carersuk.org/wales/grants](https://www.carersuk.org/wales/grants)

Turn2us is a charity that has a grants search tool. Find out more at [turn2us.org.uk](https://www.turn2us.org.uk).

You could also ask a nearby advice centre if there are local grants available.

You can also check Disability Grant's website for Wales: [disability-grants.org/grants-uk-wales.html](https://www.disability-grants.org/grants-uk-wales.html)

The Carers Support Fund programme offers services and grant funding to eligible carers in Wales. Read the details at: [carers.org/around-the-uk-our-work-in-wales/carers-support-fund-wales-programme](https://www.carers.org/around-the-uk-our-work-in-wales/carers-support-fund-wales-programme)

Your work



Working carers

If you are balancing work with caring for family or friends, you are not alone – there are 223,000 working age carers in Wales.

There are rights you have in the workplace that might help you to combine work and care (see pages 36–37). As well as these statutory rights, you may also have additional contractual rights.

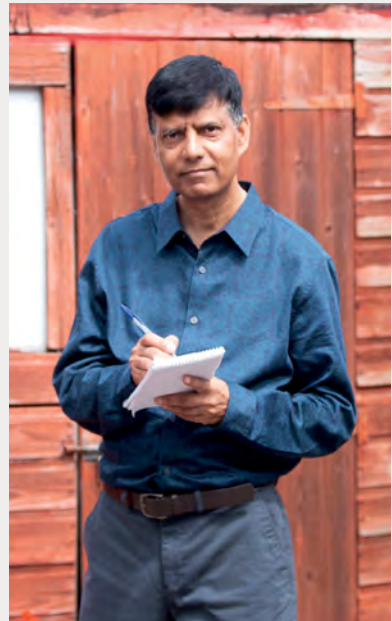
In addition to your rights at work, there might be other ways to strike a better balance, such as accessing relevant support at work (see page 38), or outside of your employment.

If you are struggling to manage work and care and are thinking of leaving work, it is important to consider the full implications this could have on your income, quality of life and future pension entitlements.

You could get a benefits check to find out what your financial situation would look like if you were to leave work or reduce your hours (see page 27).

Before deciding to give up work, it's worth seeing if you can improve your situation. See if there are any rights you have at work that could support you with your caring commitments (see pages 36–37), and check what other sources of help are available (see page 38).

Our *Working Carers Guide – Wales* provides lots more information on balancing work and care: carersuk.org/wales/your-rights-in-work



Watch our film series for useful tips on flexible working: carersuk.org/wales/flexible-working

Your rights in work

Without the right support, the stress and pressure of juggling work and care can lead people to leave their jobs. It's important, therefore, to find out about your rights and about any support that is available.

Your rights at work come from two sources:

- The law gives you 'statutory rights', which everyone has.
- Your contract of employment gives you 'contractual rights', which can be more generous than statutory rights.

The following information is about statutory rights. However it is always worth checking your contract of employment, staff handbook or letter of appointment to see if you have any contractual rights on top of your statutory rights.

All employees in England, Scotland and Wales have a right to request flexible working from the first day of employment. Employees may also now make two statutory requests within any 12-month period. This law came into effect on 6 April 2024.

Employers must agree to a flexible working request unless there is a genuine business reason not to. A decision to reject a request must be for one or more business reasons which are set out in the law.

Examples of flexible working include:

- flexitime
- home working or remote working
- hybrid working
- part-time working
- term-time working
- working compressed hours
- working staggered hours
- working annualised hours
- job sharing
- shift work or team-based rostering.

The Equality Act 2010 provides carers with **protection from some forms of discrimination**. For example, employers and providers of goods and services must not treat carers less favourably than those without caring responsibilities.

All employees have the **right to take a 'reasonable' amount of time off work to deal with an emergency or an unforeseen matter** involving a dependant. This could include your partner, child or parent, or someone living with you as part of your family – others who rely on you for help in an emergency may also qualify.

The time off is unpaid unless your employer is willing to give paid time off as a contractual right.

Examples of emergency situations:

- a disruption or breakdown in care arrangements
- the death of a dependant
- if a dependant falls ill, has been assaulted or is in an accident
- to make longer-term arrangements for a dependant who is ill or injured (but not to provide long-term care yourself)
- to deal with an incident involving a child during school hours.

If you are responsible for a child aged under 18, you are entitled to 18 weeks' **parental leave** per child, which must be taken by the child's 18th birthday. This time off is unpaid unless your employer is willing to give paid time off as a contractual right. On 6 April 2026, this right became available from the first day of employment

The Carer's Leave Act 2023 gives employees a right to one week's unpaid care leave per year in England, Scotland and Wales.

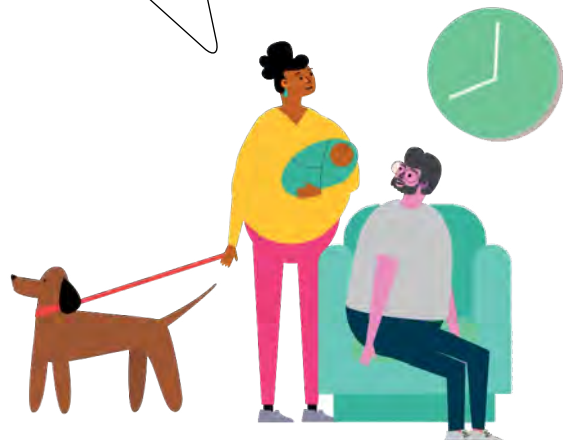
If you're 'providing or arranging care for a dependant with a long-term care need,' this law, which came into effect on 6 April 2024, may apply to you.

A 'long-term care need' could be a physical or mental related injury, disability, condition or need connected with older age where care is needed for more than three months.

This right is available from the first day of employment. The leave can be taken flexibly, as half or full days, for planned caring commitments.

Visit carersuk.org/wales/work to read our online information.

"My employer supports me with a great deal of flexibility. When an emergency or unforeseen caring need does happen, they tell me not to worry about work."



Getting support

Telling your employer that you are a carer may not always feel like an easy step.

Ask your employer if they have a carers policy or other support that could help you manage your caring responsibilities, such as flexible working arrangements.

Some organisations provide support such as counselling or other health and wellbeing services and information for carers such as advice packs. Trade unions can also be a good source of support. You may find that your colleagues are supportive, or even in similar caring situations themselves.

As well as seeing if there is any support available to carers through your workplace, you could explore what support is available outside of your employment.

This could include getting a carer's needs assessment to see if there is any assistance the local authority can offer to help you combine work and care – see page 13.

This could also involve reaching out to others who know what you are going through.

Visit carersuk.org/wales/support-where-you-live to find carers organisations and support services available for carers in your local area.

Our online forum, Carers Connect, may be a good place to speak to other carers about how you are feeling – visit forum.carersuk.org

To become part of this online community – join us as a member: carersuk.org/wales/join-us

Carers UK runs Employers for Carers, a scheme that provides advice and resources to help employers in the workplace.

The Employers for Carers Wales Hub provides specialised support in Wales for Welsh employers.

You could talk to your employer about joining the Employers for Carers Wales Hub – find out more at employersforcarers.org/about-us/wales-hub



efc wales
employers for carers



Specsavers

Bringing expert eye care and hearing services to your loved one with Specsavers Home Visits



Specsavers understands the challenges of caring for someone, and our home visit service is designed to help you look after all their sight and hearing needs.

The loved one you care for may be eligible for a home visit if one of the following applies:

- They are housebound or bedbound due to a physical disability.
- They live with a diagnosed mental health condition that makes it difficult to go out without assistance.

What to expect

Our mobile experts will provide eligible individuals with a comprehensive, NHS-funded eye test in the comfort of their own home, ensuring the same level of care and thoroughness you'd receive in-store.

For more information on Specsavers Home Visits, to check eligibility or to book an appointment, call **0800 089 0144** or visit [specsavers.co.uk/home-visits](https://www.specsavers.co.uk/home-visits)

Additionally, Specsavers now offers a free home hearing visit service in select locations in the UK. The service is tailored to each individual's needs, offering personalised eye and hearing care that's as unique as they are. It's designed to adapt to their changing circumstances and comfort levels, ensuring the best possible care in the comfort of their own home.

Why choose Specsavers Home Visits?

- **Convenience:** Our experts come directly to you.
- **Personalised care:** Visits are tailored to the individual's needs, with specialist equipment to ensure comfort and accuracy.
- **Peace of mind:** Your loved one will receive the same high-quality care as they would in-store.

Scan the QR code to watch as TV's Alison Hammond joins the Specsavers Home Visits team as its newest 'Recruit'.



Joanne's story

Joanne is an HSBC employee and unpaid carer for several family members. Here she shares her experience of juggling work and care.

“ I care for several of my closest family members who all have different disabilities and needs. My caring role involves facilitating appointments, managing all of my family's affairs, providing emotional support, dealing with education and healthcare providers, and supporting with personal care. In addition, I work full time as a Global Inclusion Delivery Manager for HSBC where I am also heavily involved in developing resources for carers and those with physical and mental health conditions.

Through my own experiences and supporting other carers in the bank, I understand the day-to-day challenges faced by working carers. Whether this is trying to juggle work with care and/or facilitating appointments, managing work deadlines and priorities or being exhausted, it is clear to me that all carers face significant challenges.

Carers bring a range of transferable skills and an empathy for others to work which is why it is so important to have them in the workplace. For example, the skills they may use advocating for their child's educational needs, such as listening and letter writing,

can easily be transferred into the workplace for the benefit of our customers. It is therefore essential that they are supported and able to be themselves at work.

To support our people, we have an Employee Resource Group which focuses on providing carers from across the bank with support in identifying themselves as carers and also the help and support they need at an appropriate time. We do this in a number of different ways such as issuing a monthly newsletter, holding events and offering a support call on a variety of carer-related topics. The group also supports those with physical and mental health conditions and gives additional help to carers when managing the needs of their dependants.

In addition to the bank's internal policies and access to an employee assistance programme, carers are supported through the bank's partnership with Carers UK. This partnership gives our employees access to the Jointly app, a wide range of online resources and the opportunity to link in with other carers through various forums. Line managers are equally well

supported through the Employers for Carers resources, which can help them feel equipped with the knowledge to support their teams.

I am very grateful for the support I receive from HSBC. They provide me with the opportunity to pursue a career and, by working flexibly, I am also able to provide the care and support required by my family.

My team are very supportive. There's always someone to have a coffee and a chat with and to make me laugh, even when things are really difficult. My line manager is equally supportive, helping me manage my workload, giving me a different perspective on things and just being there when I need him.

He holds me to account on my wellbeing which is also a huge source of help and support.

Working for an employer who understands the importance and value of supporting carers in the workplace has made a huge difference to my wellbeing and that of my family.



Directory

There are a range of national organisations that can provide help. We've listed some of these below.

Addiction Family Support

Provides support to families, friends and carers who are struggling to cope with someone's addiction to drugs or alcohol.

T 0300 888 3853

addictionfamilysupport.org.uk

Adferiad Recovery

Provides support for vulnerable people including individuals recovering from serious mental illness and their carers.

T 01792 816600

adferiad.org.uk

Age Cymru

Information and advice for the over 60s.

T 0300 303 44 98

ageuk.org.uk/cymru

Alzheimer's Society

Information and advice for people with dementia and their carers.

T 0333 150 3456

alzheimers.org.uk

Care Inspectorate Wales

The independent regulator of health and social care in Wales.

T 0300 7900 126

careinspectorate.wales

Carers Trust Wales

A network of local centres provide advice and support to carers.

T 0300 772 9600

carers.org/wales

Citizens Advice Cymru

Local offices for advice/representation on benefits, debt and housing.

T 0800 702 2020

(Advicelink Cymru)

citizensadvice.org.uk/wales

Contact

Information and advice for families who care for children with a disability or special need.

T 0808 808 3555

contact.org.uk

Independent Age

Information and advice for older people, their families and carers.

T 0800 319 6789

independentage.org

Living Made Easy

Information and advice on equipment for independent living.
livingmadeeasy.org.uk

Macmillan Cancer Support

Information and advice for people with cancer, their families and carers.

T 0808 808 00 00
macmillan.org.uk

Marie Curie

Support for people living with any terminal illness, and their families.

T 0800 090 2309
mariecurie.org.uk

Mencap

Information and advice for people with a learning disability, their families and carers.

T 0808 808 1111
mencap.org.uk

Relate

Counselling and support services for couples, families and young people.

relate.org.uk

Rethink Mental Illness

Information, advice and community services for people affected by severe mental illness and their carers.

T 0808 801 0525
rethink.org

Shelter Cymru

Information and advice on housing issues.

T 08000 495 495
sheltercymru.org.uk

Stroke Association

Information, support and advice to help those affected by stroke.

T 0303 3033 100
stroke.org.uk

Turn2us

Information and advice on benefits and grants.

turn2us.org.uk

There may be local support groups and organisations that can also provide help. Visit carersuk.org/wales/support-where-you-live

Carers UK Helpline

We're here for you with information, guidance and practical support every step of the way.

If you mention where you are based, we will aim to tailor our guidance for you.

E advice@carersuk.org **T** 0808 808 7777





In Wales, in a typical week there are 311,000 people looking after family or friends who are older, disabled or seriously ill.

However caring affects you, we're here.

For information and tailored support, contact the Carers UK Helpline:

E advice@carersuk.org

T 0808 808 7777

This guide was proudly supported by



Llywodraeth Cymru
Welsh Government



Tell us how you found this guide www.surveymonkey.co.uk/r/ZN7JCYS



Carers Wales

T 029 2081 1370 | E info@carerswales.org | carerswales.org



@carerswales



/carerswales



/carerswales



@carers_uk



@carers_uk

This guide is designed to provide helpful information and advice. While we work to ensure that our information is accurate and up to date, we would recommend contacting the Carers UK Helpline or visiting our website for more information.

Carers Wales is a part of Carers UK, a charity registered in England and Wales (246329) and in Scotland (SC039307) and a company limited by guarantee registered in England and Wales (864097). Registered office 20 Great Dover Street, London SE1 4LX.

Publication code: W9040 © Carers Wales, May 2026. Next review April 2027.